



### 6 George Street Serpentine VIC

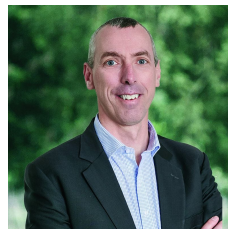
3 1 4

Situated on approx. 2000 sq mts is where you will find this affordable neat and tidy home. Consisting of 3 bedrooms, open plan kitchen/meals/living, 3 piece bathroom, separate toilet and laundry. The updated kitchen includes gas hot plate, electric under bench oven, dishwasher and rangehood. With ducted evaporative cooling, split system, and a solid fuel heater you will be comfortable all year round. Outside you will find a single carport, single garage plus a large workshop, rear decked entertaining area plus a swimming pool. Serpentine is located approximately 47 kms from Bendigo and 20kms from Bridgewater or Inglewood. The town has a post office, roadhouse, bowling club and recreation oval. Call today to arrange your inspection.

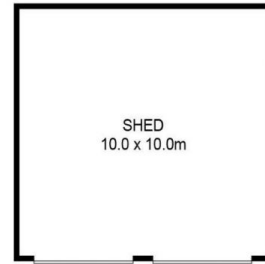
Note: ALL ENQUIRIES MUST INCLUDE A PHONE

**Price** : \$ 250,000

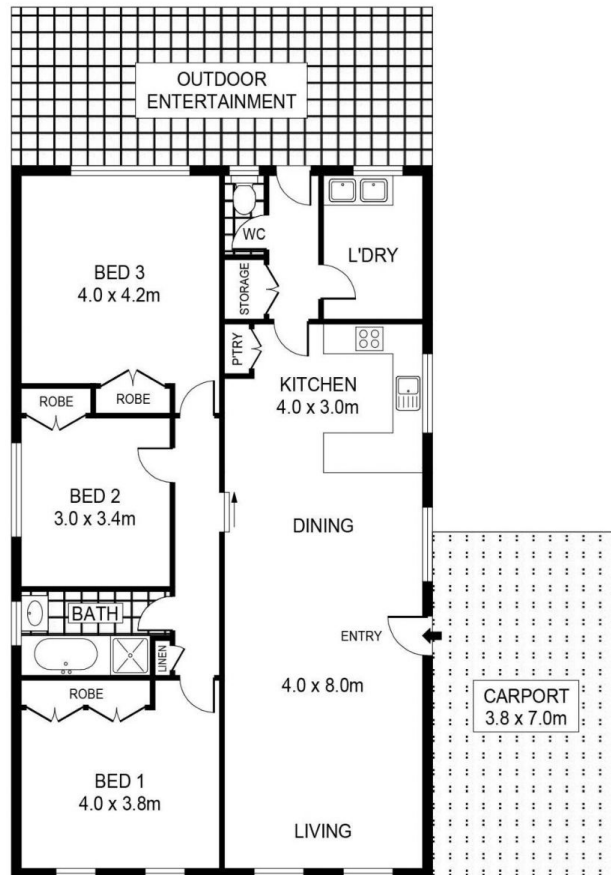
**View** : <https://www.bendigoballaratrealstate.com.au/sale/vic/greater-bendigo-region/serpentine/residential/house/6666997>



**Andrew Murphy**  
03 5444 9888  
0407 303 386



**SHED**  
(NOT TO SCALE)



6 GEORGE STREET