

Bendigo



9 Gumnut Rise Strathdale VIC

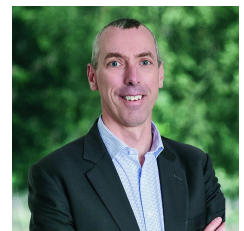
4 2 2

Built by renowned local builders - McCarthy Homes is this stylish home offering space for your entire family. Set on a wonderful, elevated block looking back towards the Bendigo Regional Park, adjoining the Chelsea Blvd Nature Reserve and positioned at the end of a quiet court offering privacy and tranquillity rarely seen. On the main level we have the formal lounge which overlooks the front balcony, spacious main bedroom, a kitchen, family, dining area which would delight anyone who enjoys entertaining. We also have a third living area plus powder room. Off the main living area is a spacious outdoor entertaining area with an outdoor kitchen. Downstairs we have three more bedrooms, family bathroom and a great study. This home has so much space for living, working, studying from home, and heaps of storage. Fantastic condition inside and out, wonderful décor

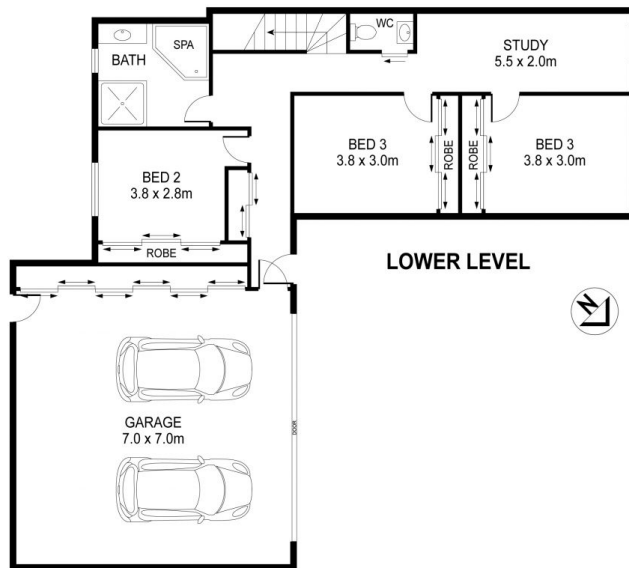
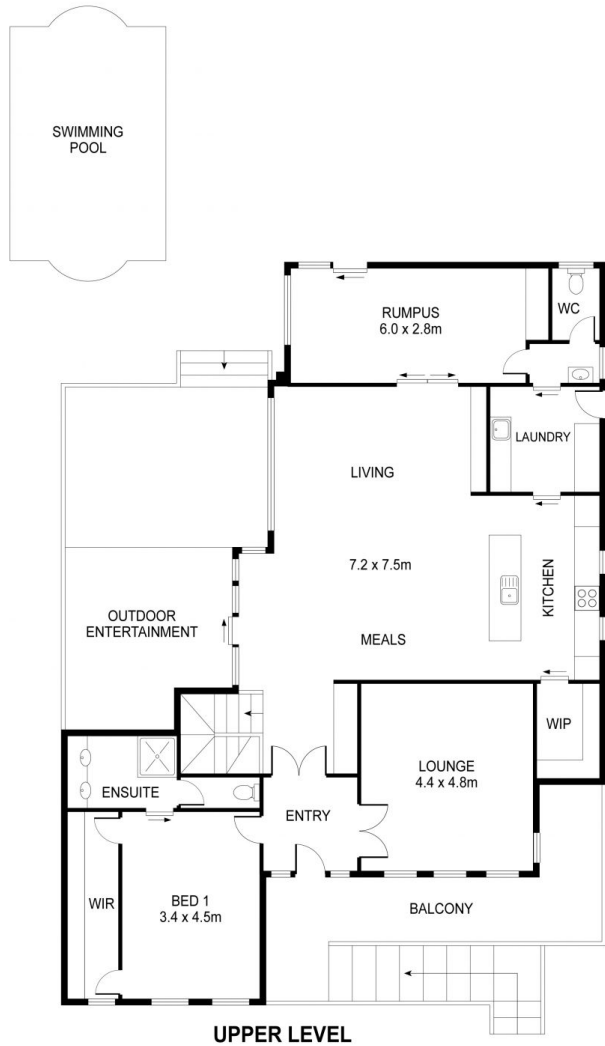
View : <https://www.bendigoballaratrealstate.com.au/sale/vic/greater-bendigo-region/strathdale/residential/house/6753068>



Darryn Mawby
03 54449888
0418 509 717



Andrew Murphy
03 5444 9888
0407 303 386



SCALE (METRES)

PLANS SHOWN ONLY INDICATIVE OF LAYOUT. DIMENSIONS ARE APPROXIMATE.
Ref No: 67644T

INT: 319 m²
EXT: 63 m²

9 GUMNUT RISE