

Bendigo



## 22 Hillcrest Road Maiden Gully VIC

5 3 6

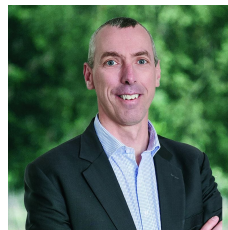
Located in the tightly held pocket of Maiden Gully around 10 minutes from Bendigo's CBD while being within easy access to Marist College and everything that the thriving Maiden Gully hub has to offer. This is a golden opportunity to purchase a fantastic 10 Acre (approx) lifestyle family paradise with future potential for development given the Maiden Gully Development Strategy and re-zoning.

Highlights of this outstanding property are a beautifully presented quality built home with five-bedrooms, main with ensuite and walk in robe with all remaining bedrooms offering walk in robes, multiple spacious living areas, large light filled open plan kitchen benefits from walk in pantry, quality appliances, an island bench which will cater for the largest of functions and flows outside to a large alfresco area perfect for those looking to entertain. An additional sp

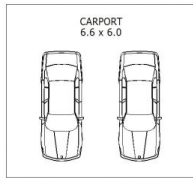
**Price** : \$1,750,000 - \$1,850,000

**Land Size** : 10 Acres

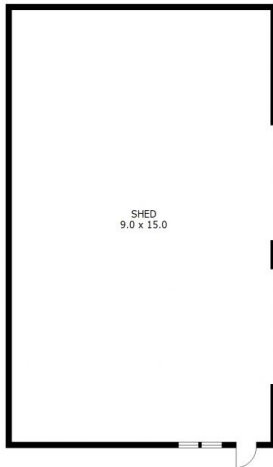
**View** : <https://www.bendigoballaratrealstate.com.au/sale/vic/greater-bendigo-region/maiden-gully/residential/house/7299961>



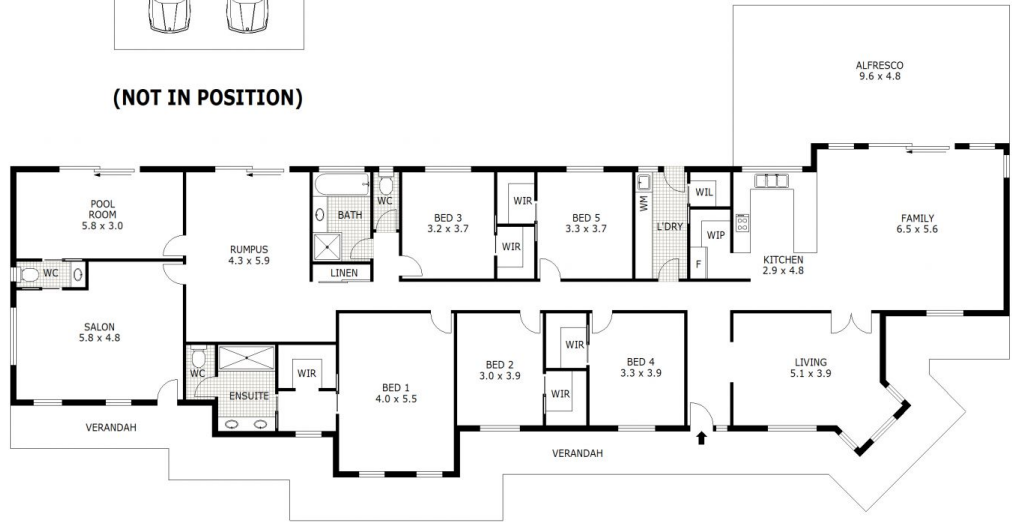
**Andrew Murphy**  
03 5444 9888  
0407 303 386



(NOT IN POSITION)



(NOT IN POSITION)



Scale in metres. Indicative only. Dimensions are approximate. All information contained herein is gathered from sources we believe to be reliable. However we cannot guarantee its accuracy and interested parties should rely on their own enquiries.

Residence	- 305 m <sup>2</sup>
Verandah	- 49 m <sup>2</sup>
Alfresco	- 65 m <sup>2</sup>
Shed	- 135 m <sup>2</sup>
Carport	- 40 m <sup>2</sup>
<b>Total</b>	<b>- 594 m<sup>2</sup></b>

# 22 Hillcrest Road, Maiden Gully