

Bendigo



7 Philden Way Spring Gully VIC

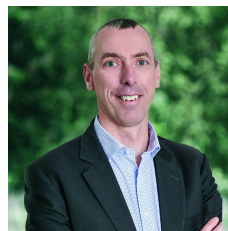
4 2 2

This impressive contemporary brick veneer home offers peaceful and effortless living. Immaculately presented with nothing to do but move in and enjoy the tranquillity and sanctuary this Spring Gully residence affords.

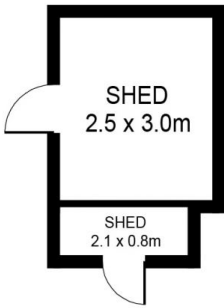
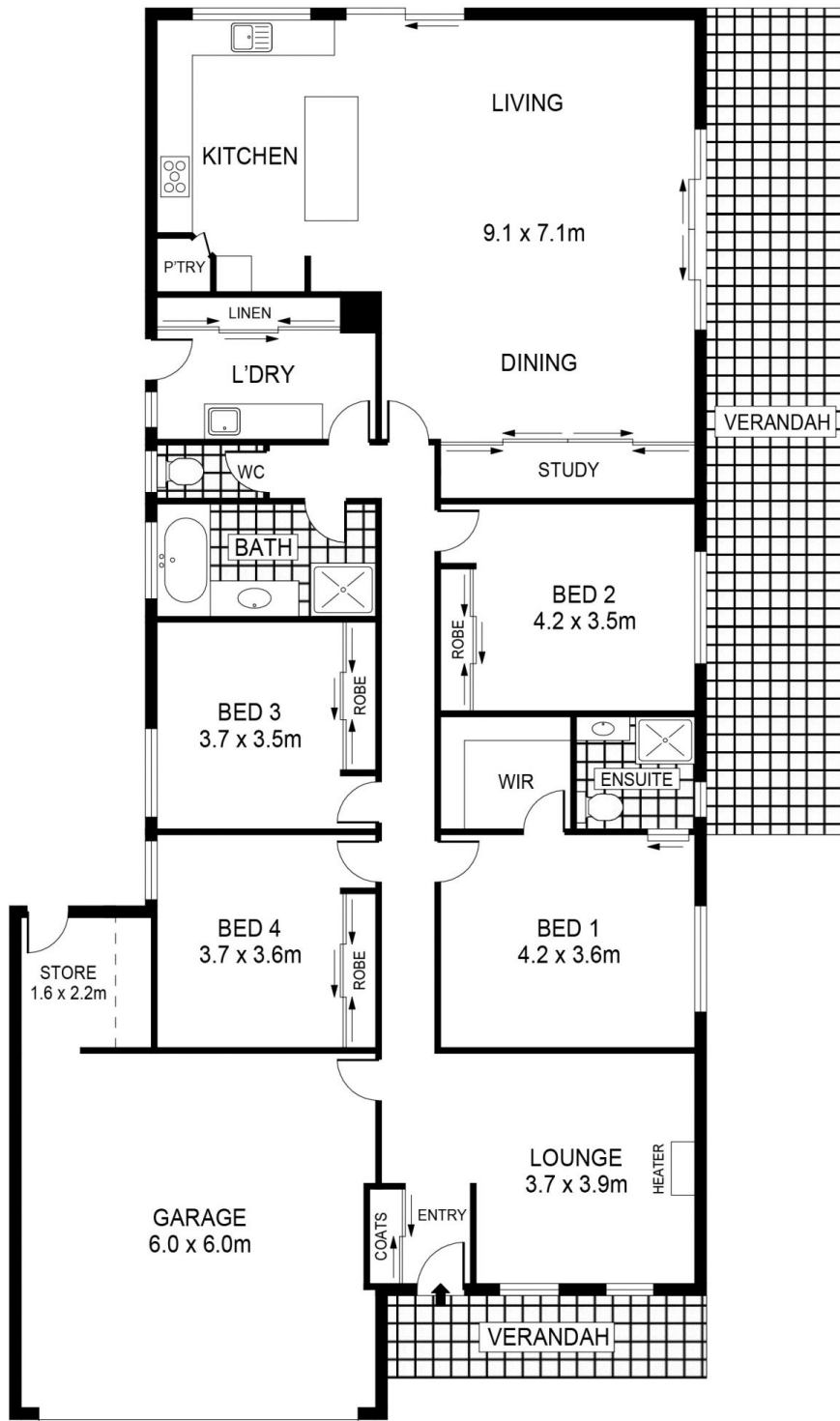
View : <https://www.bendigoballaratrealstate.com.au/sale/vic/greater-bendigo-region/spring-gully/residential/house/7430261>

Offering four bedrooms, main with ensuite and WIR, with remaining bedrooms all with BIR's, formal lounge, study nook, open plan kitchen/dining/living, family bathroom, separate toilet and large laundry with excellent storage. With ample stone bench tops, 900mm appliances, rangehood, dishwasher, pantry and a large fridge space, the kitchen is fresh and functional. Ducted heating and cooling with keep you comfortable all year round.

Outside is a decked alfresco area perfect for entertaining while overlooking the landscaped established gardens.



Andrew Murphy
03 5444 9888
0407 303 386



SCALE (METRES)

SCALE IN METRES. INDICATIVE ONLY. DIMENSIONS ARE APPROXIMATE. ALL INFORMATION CONTAINED HEREIN IS GATHERED FROM SOURCES WE BELIEVE TO BE RELIABLE. HOWEVER WE CANNOT GUARANTEE ITS ACCURACY AND INTERESTED PARTIES SHOULD RELY ON THEIR OWN ENQUIRIES.
Ref. No: 230210

INT	:	180m ²
SHED	:	9m ²
GARAGE	:	41m ²
VERANDAH	:	41m ²

7 PHILDEN WAY

SPRING GULLY