

Bendigo



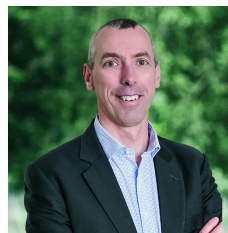
11 Churchill Avenue Flora Hill VIC

2 1

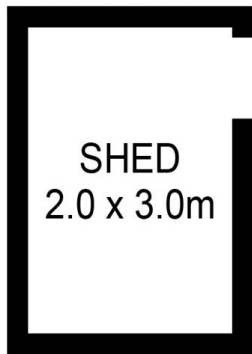
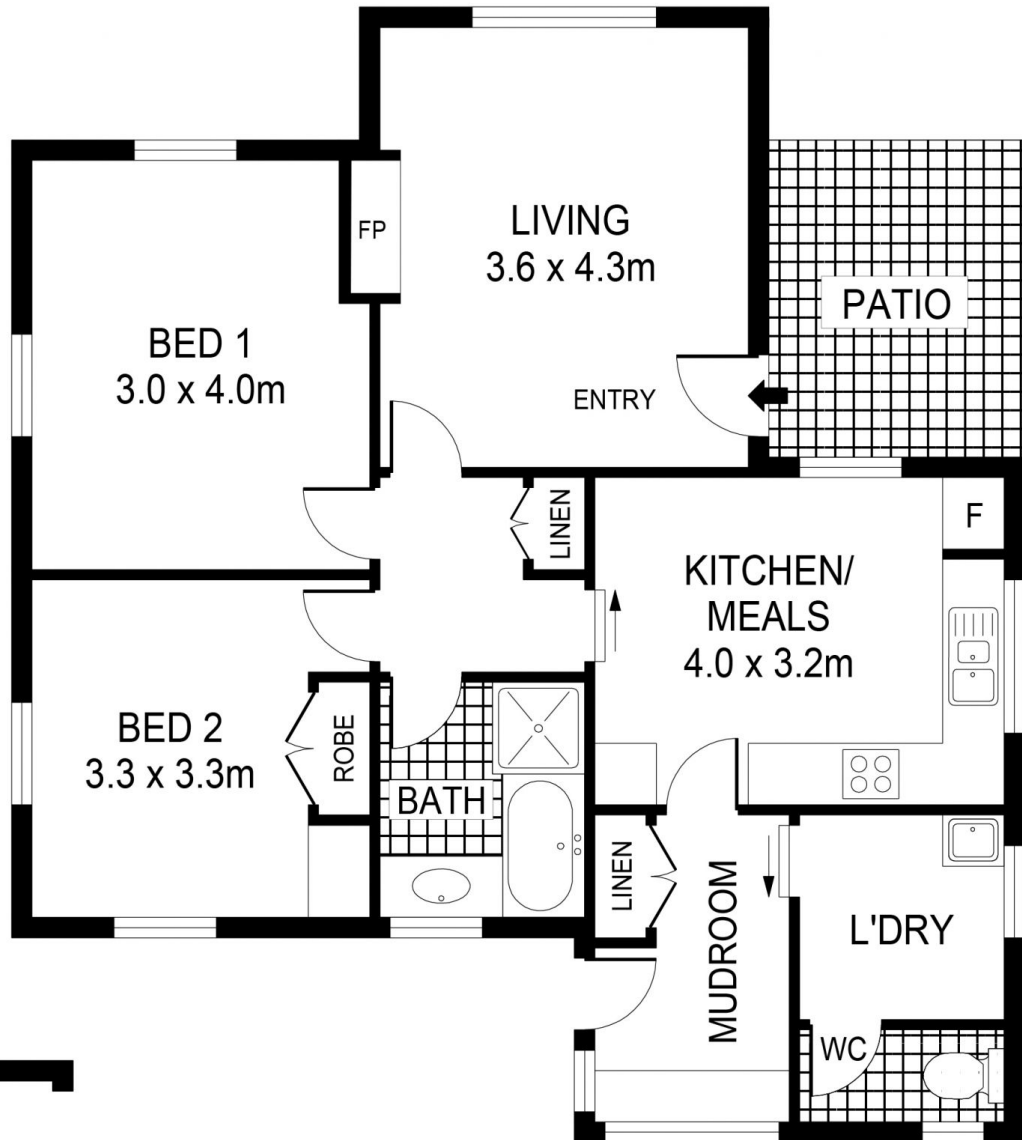
What a location! With a solid brick home and a block size well and truly worthy of inspection! The home features two good sized bedrooms, spacious lounge, neat bathroom with bath, shower & separate toilet, functional kitchen with gas stove and plenty of cupboards along with a separate laundry. Out the back you will find a large enclosed backyard and garden shed. The property has rear access via Heartbreak Lane with development potential (STCA). Situated in a blue-chip location in the stellar suburb of Flora Hill. That means it's less than 2km from Central Bendigo, walking distance to La Trobe University and Bendigo South East College while having excellent access to Kennington Village. This property offers potential to all buyers, looking at the entry level in the market and presents perfectly for investors or home owners. A beautiful allotment complete wit ...

Price : \$ 390,000

View : <https://www.bendigoballaratrealstate.com.au/sale/vic/greater-bendigo-region/flora-hill/residential/house/7441593>



Andrew Murphy
03 5444 9888
0407 303 386



SCALE (METRES)

SCALE IN METRES. INDICATIVE ONLY. DIMENSIONS ARE APPROXIMATE. ALL INFORMATION CONTAINED HEREIN IS GATHERED FROM SOURCES WE BELIEVE TO BE RELIABLE. HOWEVER WE CANNOT GUARANTEE IT'S ACCURACY AND INTERESTED PARTIES SHOULD RELY ON THEIR OWN ENQUIRIES.
Ref. No. 230221



INT : 83m²
 SHED : 6m²
 PATIO : 8m²

11 CHURCHILL AVENUE

FLORA HILL