



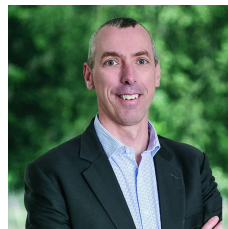
### 3 Strathdale Crescent Strathdale VIC

4 2 3

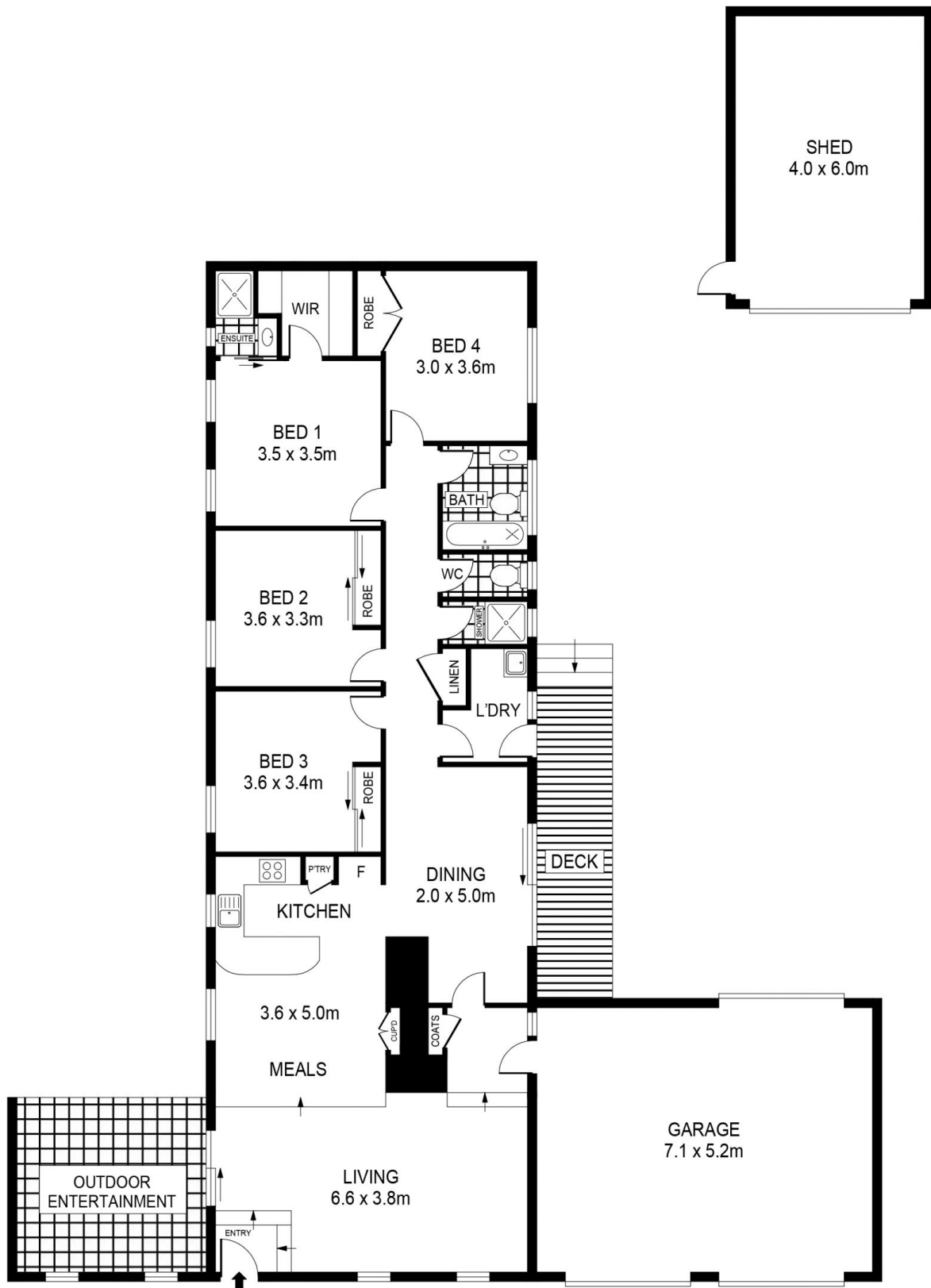
Neat as a pin both inside and out, this spacious family brick home is in the ideal location, within walking distance to Kennington Reservoir and close by to Latrobe University, primary schools, walking tracks and parks while also being only minutes from Bendigo's CBD. Perfect for families seeking a move-in ready property or those looking to add an investment to their portfolio in a highly sought after Strathdale locale. The home consists of four bedrooms, main with ensuite and WIR, large formal living space, spacious kitchen/dining/family area, family bathroom and laundry also service the home. The chef style modern kitchen includes stainless steel appliances along with plenty of bench and cupboard space for the family needs. Ducted heating and cooling along with split systems will keep you comfortable all year round. There is access from the home to a cover ...

**Price** : \$ 620,000

**View** : <https://www.bendigoballaratrealstate.com.au/sale/vic/greater-bendigo-region/strathdale/residential/house/7506153>



**Andrew Murphy**  
03 5444 9888  
0407 303 386



SCALE (METRES)

SCALE IN METRES. INDICATIVE ONLY. DIMENSIONS ARE APPROXIMATE. ALL INFORMATION CONTAINED HEREIN IS GATHERED FROM SOURCES WE BELIEVE TO BE RELIABLE. HOWEVER WE CANNOT GUARANTEE ITS ACCURACY AND INTERESTED PARTIES SHOULD RELY ON THEIR OWN ENQUIRIES.  
Ref. No: 230320

INT	:	140m <sup>2</sup>
DECK	:	11m <sup>2</sup>
SHED	:	24m <sup>2</sup>
CARPORT	:	37m <sup>2</sup>
OUTDOOR ENTERTAINMENT	:	15m <sup>2</sup>

### 3 STRATHDALE CRESCENT