



19 Cloverfields Drive Epsom VIC

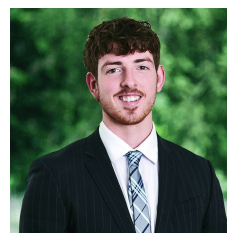
3  3  3 

There's so much to love about this beautiful property which was built by one of Bendigo's most reputable boutique builders McKinley Builders, this home is well equipped with a long list of features while being set in such a convenient location. Offering attractive street appeal, and an adaptable floorplan, this quality built home will impress a wide variety of buyers. Comprises 2 bedrooms with a spacious main including walk-in robe and ensuite, large open plan kitchen/meals plus a separate living/space, Gym/3rd bedroom with access to its own separate bathroom, family bathroom, laundry with excellent storage and separate toilet. The kitchen includes stainless steel appliances, stone bench tops along with plenty of storage including a butlers pantry. Abundance of space with side vehicle access leading to a single garage with auto-roller door which is ideal for ...

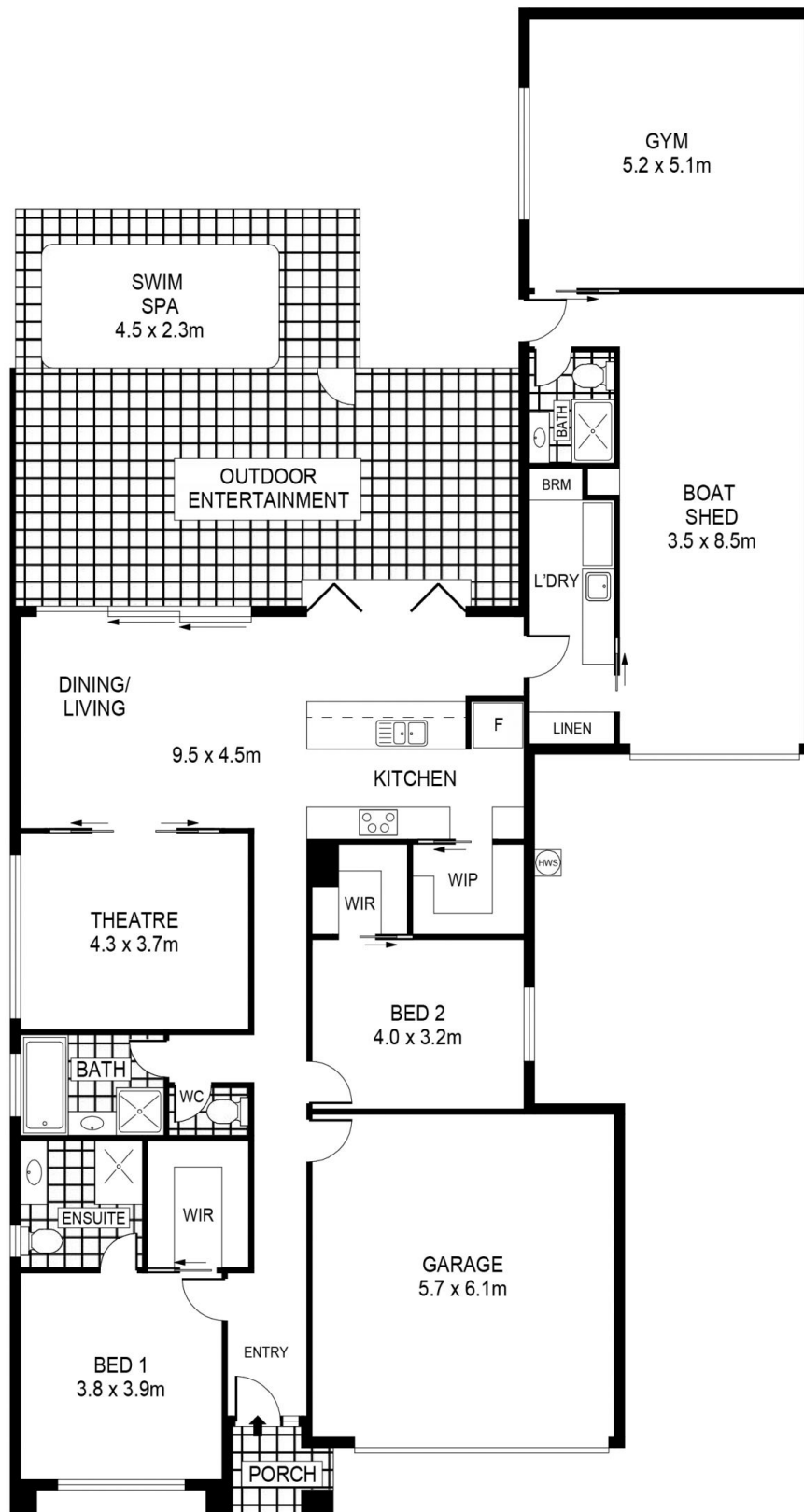
View : <https://www.bendigoballaratrealstate.com.au/sale/vic/greater-bendigo-region/epsom/residential/home/7530593>



Andrew Murphy
03 5444 9888
0407 303 386



Alexander Smith-Ralph
03 54449888
0419 295 761



SCALE (METRES)

SCALE IN METRES. INDICATIVE ONLY. DIMENSIONS ARE APPROXIMATE. ALL INFORMATION CONTAINED HEREIN IS GATHERED FROM SOURCES WE BELIEVE TO BE RELIABLE. HOWEVER WE CANNOT GUARANTEE ITS ACCURACY AND INTERESTED PARTIES SHOULD RELY ON THEIR OWN ENQUIRIES.
Ref. No: 230404

INT	:	218m ²
EXT	:	63m ²
GARAGE	:	35m ²

19 CLOVERFIELD CRESCENT

EPSOM