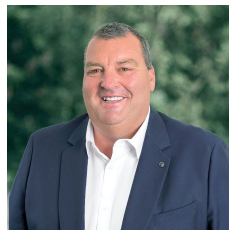
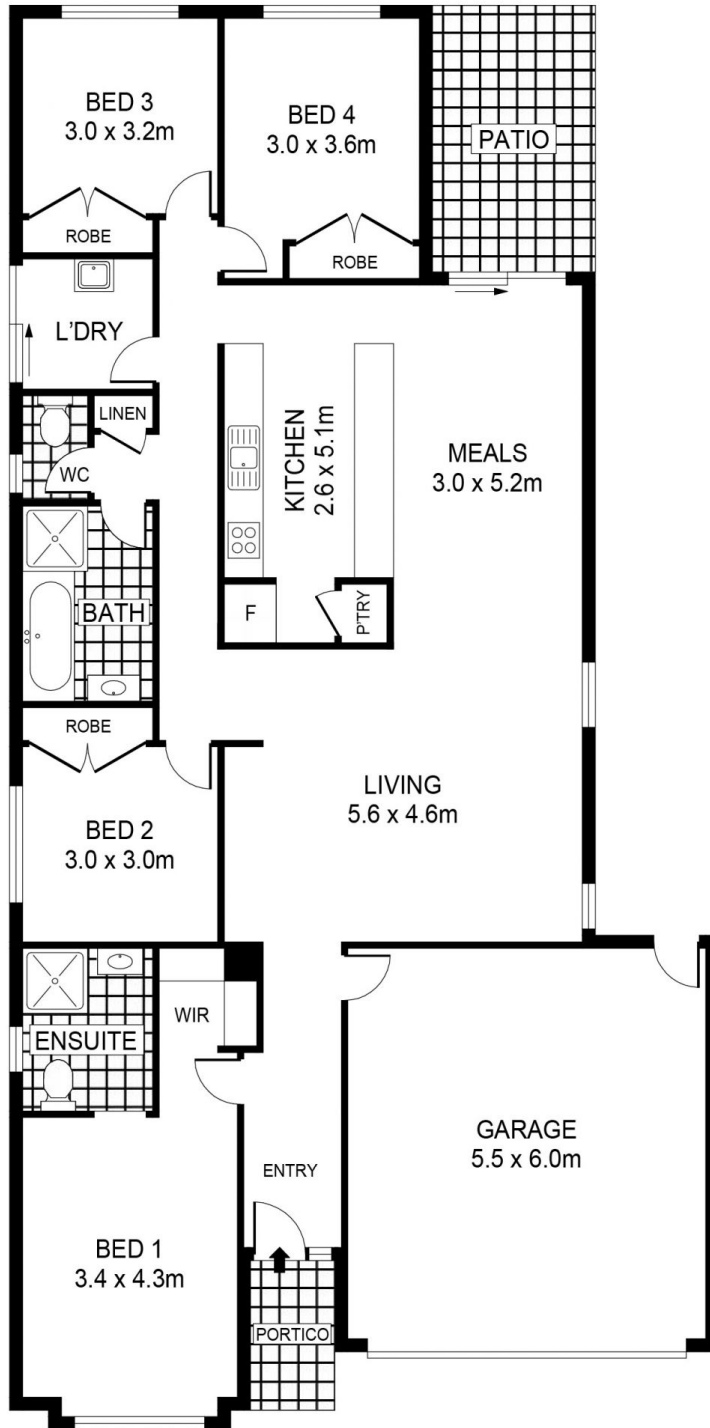
**5/350 Midland Highway Epsom VIC****4** **2** **2**

5/350 Midland Highway, Epsom is a charming, contemporary townhouse that offers the perfect blend of style, comfort, and convenience. Situated in a sought-after location, this property presents a fantastic opportunity for first-home buyers, small families, or investors looking to expand their portfolio. With its modern features, well-designed layout, and close proximity to amenities, this townhouse is sure to impress. As you step through the front door the wide hall opens into the living areas which seamlessly flow into each other, creating a warm and welcoming open plan atmosphere. The well-appointed kitchen is equipped with a dishwasher, pantry cupboard, under-bench oven, gas cooktop and range hood and a long stylish countertop making cooking and plating meals a delight. Comprising 4 bedrooms, including a master suite with an ensuite bathroom, walk in robe ...

Price : \$ 452,500
Land Size : 431 sqm
View : <https://www.bendigoballaratrealstate.com.au/sale/vic/greater-bendigo-region/epsom/residential/house/7667667>



Cameron Register
03 5444 9888
0411 956 937



SCALE (METRES)

SCALE IN METRES. INDICATIVE ONLY. DIMENSIONS ARE APPROXIMATE. ALL INFORMATION CONTAINED HEREIN IS GATHERED FROM SOURCES WE BELIEVE TO BE RELIABLE. HOWEVER WE CANNOT GUARANTEE ITS ACCURACY AND INTERESTED PARTIES SHOULD RELY ON THEIR OWN ENQUIRIES.
Ref. No: 230725



INT	:	160m ²
PATIO	:	10m ²
GARAGE	:	33m ²
PORTICO	:	3m ²
GARDEN SHED	:	3m ²

5/350 MIDLAND HIGHWAY