

## 7 Philden Way Spring Gully VIC

4  2  2 

4 Bedrooms 2 Living Area Family Home

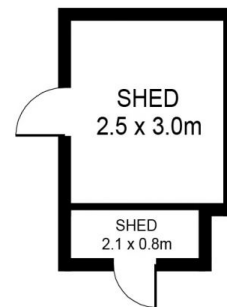
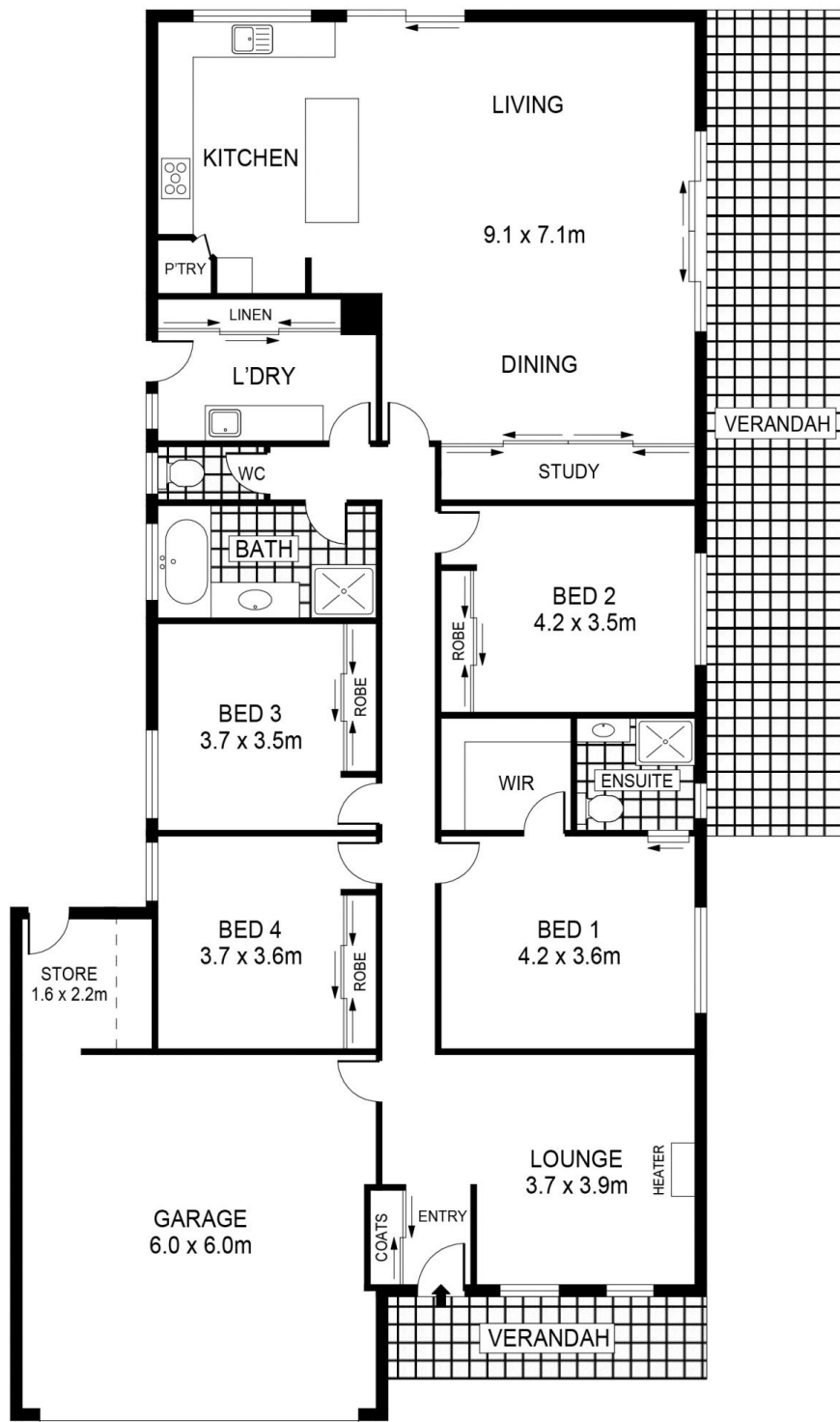
Features Include:

- Main bedroom with walk in robe and ensuite
- Other bedroom with built in robes
- 2 Living areas + Study
- Kitchen with gas/electric cooking, granite bench tops and lots of storage
- Ducted heating/cooling
- Covered entertaining area and garden shed with enclosed yard
- Double remote garage with direct internal access
- Solar System that may reduce electricity bills
- Walking distance to One Tree Hill Hotel and the Spring Gully Reserve

**View** : <https://www.bendigoballaratrealstate.com.au/lease/vic/greater-bendigo-region/spring-gully/residential/house/7694652>



**Sonya Hancock**  
03 5444 9888



SCALE IN METRES. INDICATIVE ONLY. DIMENSIONS ARE APPROXIMATE. ALL INFORMATION CONTAINED HEREIN IS GATHERED FROM SOURCES WE BELIEVE TO BE RELIABLE. HOWEVER WE CANNOT GUARANTEE ITS ACCURACY AND INTERESTED PARTIES SHOULD RELY ON THEIR OWN ENQUIRIES.  
Ref. No: 230210

INT	: 180m <sup>2</sup>
SHED	: 9m <sup>2</sup>
GARAGE	: 41m <sup>2</sup>
VERANDAH	: 41m <sup>2</sup>

7 PHILDEN WAY

SPRING GULLY