



10 Garden Drive Epsom VIC

3 2 2

The home offers 3 good size bedrooms plus additional office or 4th bedroom. The master bedroom has a large walk in robe and ensuite with his and hers vanities. There is the modern open plan living, kitchen with 90cm cook top and oven and dining with a separate 2nd living area which could be ideal for the kids play room. With evaporative cooling and ducted heating for all year around comfort and security camera as well solar panels to keep the bills down. The double lockup garage has direct internal access as well as a insulated powered workshop and an excellent outdoor entertaining area overlooking the landscaped garden. Close proximity to Epsom shopping village and schools. An inspection will impress.

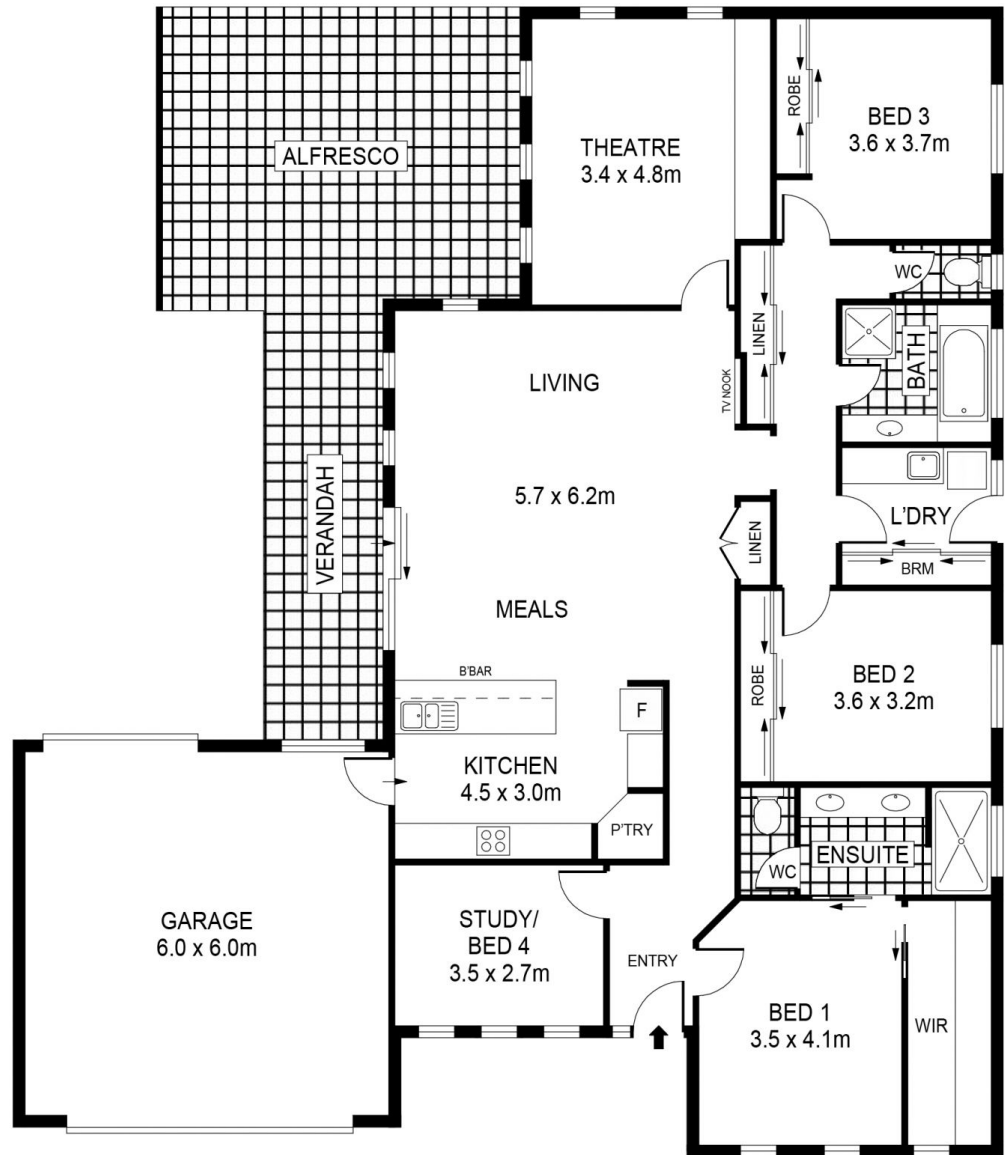
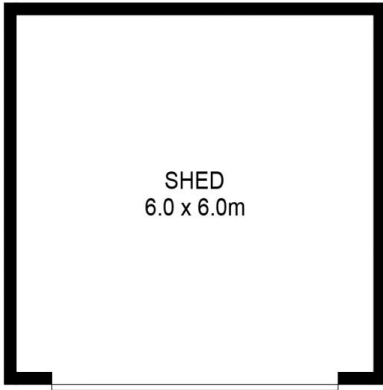
Price : \$ 665,000

Land Size : 808 sqm

View : <https://www.bendigoballaratrealstate.com.au/sale/vic/greater-bendigo-region/epsom/residential/house/7708182>



Sue Dearaugo
03 54449888
0418 518 774



SCALE (METRES)

SCALE IN METRES. INDICATIVE ONLY. DIMENSIONS ARE APPROXIMATE. ALL INFORMATION CONTAINED HEREIN IS GATHERED FROM SOURCES WE BELIEVE TO BE RELIABLE. HOWEVER WE CANNOT GUARANTEE ITS ACCURACY AND INTERESTED PARTIES SHOULD RELY ON THEIR OWN ENQUIRIES.
Ref. No: 230817

INT	:	168m ²
SHED	:	36m ²
GARAGE	:	36m ²
ALFRESCO	:	30m ²
VERANDAH	:	14m ²

10 GARDEN DRIVE EPSOM