



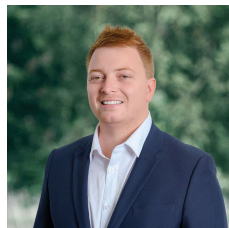
40 Hilltop Drive Eppalock VIC

4  2  2 

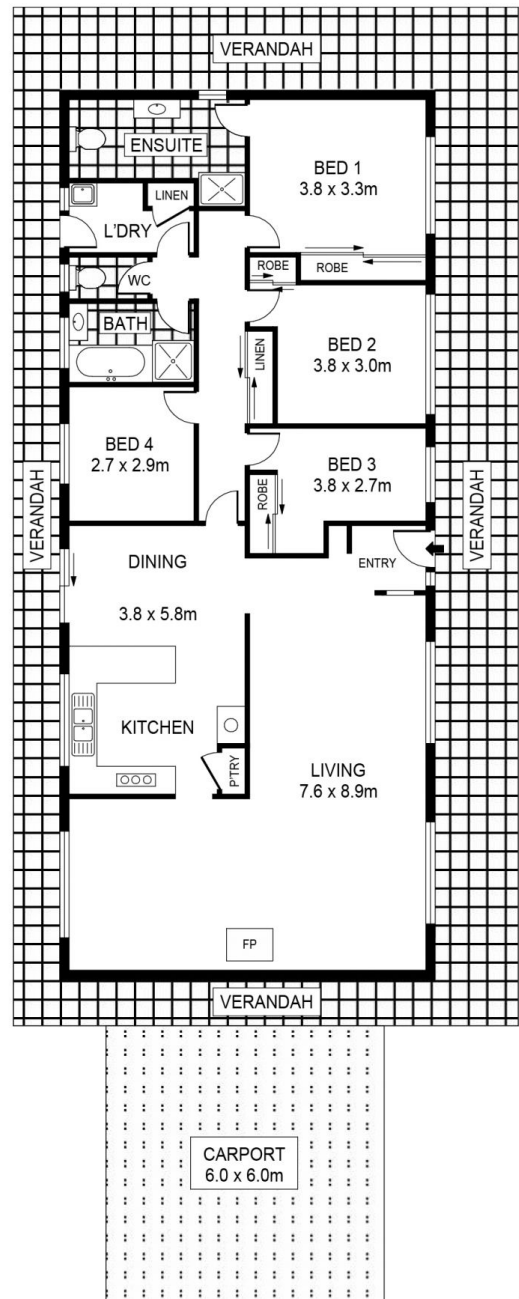
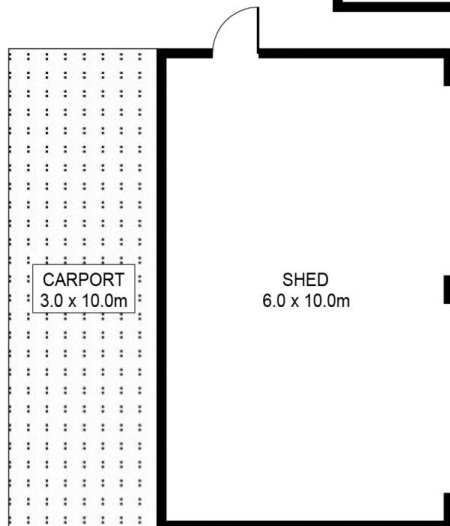
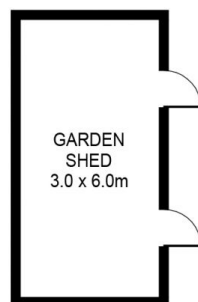
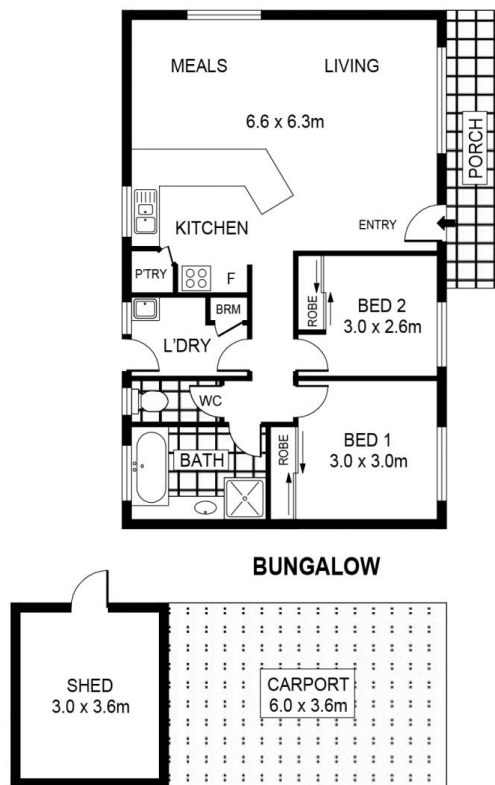
Nestled in the serene landscapes of Eppalock, 40 Hilltop Drive welcomes you to a spacious and versatile family abode. With 4 bedrooms, 2 bathrooms, and a captivating wrap-around deck, this property offers a harmonious blend of comfort and functionality while also boasting solar power on the roof, harnessing the sun's energy for sustainable living.

The living area seamlessly envelopes the kitchen-dining area, creating an expansive and inviting space for relaxation and entertainment. Throughout the home, you'll find not only a cosy wood fireplace, but split-system air conditioning, three ceiling fans, and ducted evaporative cooling system extending throughout the house ensuring year-round comfort.

Price : \$ 850,000
Land Size : 20 Acres
View : <https://www.bendigoballaratrealstate.com.au/sale/vic/greater-bendigo-region/eppalock/residential/house/7725412>



Hayden Youngson
 03 5444 9888
 0448 512 165



SCALE (METRES)

SCALE IN METRES. INDICATIVE ONLY. DIMENSIONS ARE APPROXIMATE. ALL INFORMATION CONTAINED HEREIN IS GATHERED FROM SOURCES WE BELIEVE TO BE RELIABLE. HOWEVER WE CANNOT GUARANTEE ITS ACCURACY AND INTERESTED PARTIES SHOULD RELY ON THEIR OWN ENQUIRIES.
Ref. No: 230906

INT	:	159m ²
SHED	:	71m ²
PORCH	:	7m ²
CARPORT	:	88m ²
VERANDAH	:	84m ²
BUNGALOW	:	78m ²
GARDEN SHED	:	18m ²



40 HILLTOP DRIVE