



16 Eleanor Drive Campbells Creek VIC

3 1 3

Nestled in the charming township of Campbells Creek, this property presents an exciting prospect for country lifestyle with low maintenance living and the attraction of nearby amenities.

Placed on a generously sized 1330m2 corner allotment, this 3-bedroom brick home, positioned north facing allows lovely winter sun. This property offers immediate comfort and boundless space with the opportunity to live and feel the country lifestyle.

With a great family floorplan, the residence comprises 3 bedrooms, featuring built-in robes in bedrooms 2 and 3 and a walk-in robe in the main bedroom for added convenience. There is a two-way bathroom accompanied by a separate toilet.

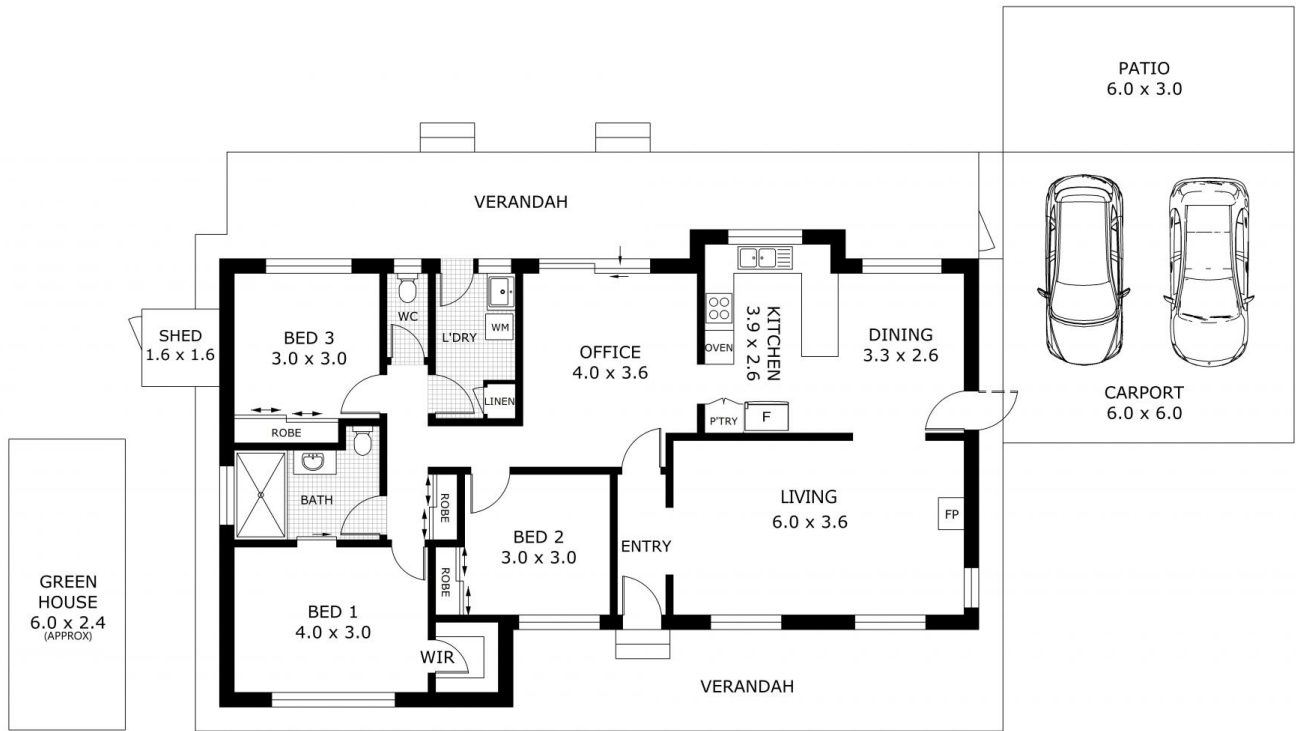
Price : \$ 575,000

Land Size : 1330 sqm

View : <https://www.bendigoballaratrealstate.com.au/sale/vic/greater-bendigo-region/campbells-creek/residential/house/7776115>



Jen Wallace
03 54449888
0407 867 839



(NOT IN POSITION)



Scale in metres. Indicative only. Dimensions are approximate. All information contained herein is gathered from sources we believe to be reliable. However we cannot guarantee its accuracy and interested parties should rely on their own enquiries.

| | |
|-------------|-----------------------|
| Residence | - 116.3m ² |
| Patio | - 18.0m ² |
| Verandah | - 65.7m ² |
| Carport | - 36.0m ² |
| Shed | - 2.5m ² |
| Green House | - 14.4m ² |
| Total | - 252.9m ² |



16 Eleanor Drive, Campbells Creek