

Bendigo



### 1916 Bendigo - Maryborough Road Shelbourne VIC

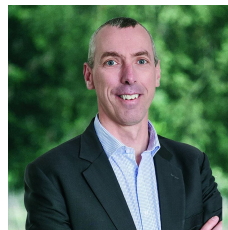
2 1 2

Escape the hustle and bustle of city living with this gorgeous, neat as a pin, mud brick home. Situated on approximately 100 acres in Shelbourne, this rare and unique lifestyle opportunity awaits someone looking for the ultimate tree change while only being 20 minutes from the heart of Bendigo. The main residence features a generous floor plan, comprising multiple bedrooms, expansive open plan living/kitchen/dining area, functional bathroom with shower, bath, vanity and separate toilet. Immerse yourself in the warmth of the fireplace during winter nights, or bask in the sunlight that floods through large windows. Ample water storage by the way of tanks and large dam. To round off the features outside is a single carport and plenty of storage with shedding. Situated only a short drive to all the amenities of Kangaroo flat while also boasting excellent access t ...

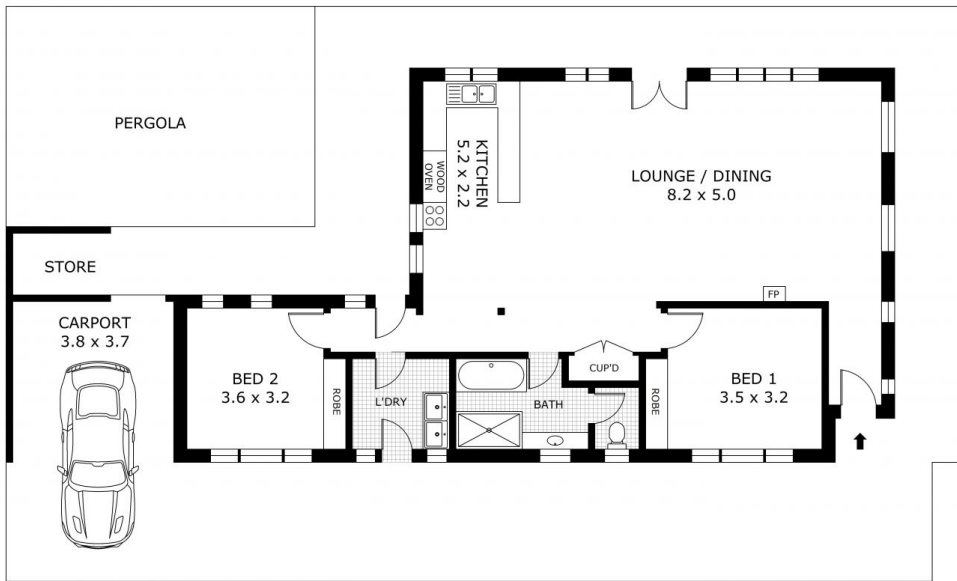
**Price** : \$625,000 - \$675,000

**Land Size** : 41.47 ha

**View** : <https://www.bendigoballaratrealestate.com.au/sale/vic/-/shelbourne/residential/house/7871394>



**Andrew Murphy**  
03 5444 9888  
0407 303 386



( NOT IN POSITION )



Scale in metres. Indicative only. Dimensions are approximate. All information contained herein is gathered from sources we believe to be reliable. However we cannot guarantee its accuracy and interested parties should rely on their own enquiries.

Residence	- 102.6 m <sup>2</sup>
Carport	- 14.0 m <sup>2</sup>
Pergola	- 35.0 m <sup>2</sup>
Store	- 35.6 m <sup>2</sup>
Total	- 187.2 m <sup>2</sup>



# 1916 Bendigo-Maryborough Road, Shelbourne