

Bendigo

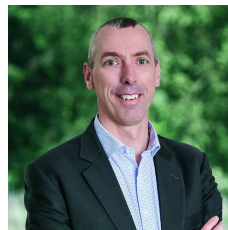


### 398 Obriens Lane Longlea VIC

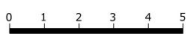
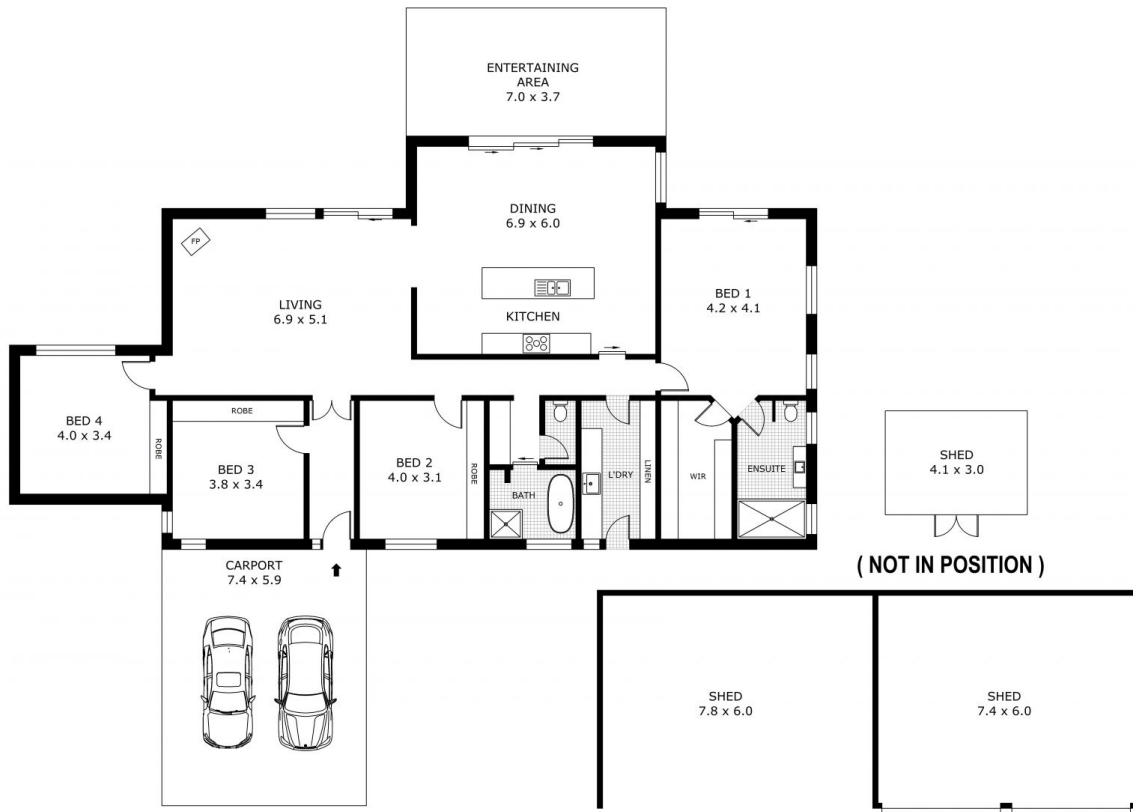
4 2 6

As you drive into the entrance of this remarkable property, a sense of peace and tranquility immediately embraces you, encapsulating the exceptional ambiance of this superb Longlea location. Positioned on approximately 25 acres (10.51 hectares), this thoughtfully designed family home defines spaciousness in every corner of this residence. From the numerous light-filled open living areas to the vast outdoor expanse, this home exudes warmth and adaptability. The home offers four bedrooms, main with ensuite and WIR, while the remaining bedrooms all contain built in robes. Spacious formal lounge where you can immerse yourself in the warmth of the fireplace during winter nights or bask in the sunlight that floods through large windows. The modern kitchen, equipped with quality appliances and plenty of bench and cupboard space which seamlessly connects to a casual ...

**Price** : \$ 930,000  
**Land Size** : 25 Acres  
**View** : <https://www.bendigoballaratrealstate.com.au/sale/vic/greater-bendigo-region/longlea/residential/house/7871395>



**Andrew Murphy**  
03 5444 9888  
0407 303 386



Scale in metres. Indicative only. Dimensions are approximate. All information contained herein is gathered from sources we believe to be reliable. However we cannot guarantee its accuracy and interested parties should rely on their own enquiries.

Residence	- 201.2 m <sup>2</sup>
Ent. Area	- 25.9 m <sup>2</sup>
Carport	- 43.6 m <sup>2</sup>
Shed	- 103.5 m <sup>2</sup>
Total	- 374.2 m <sup>2</sup>



# 398 Obriens Lane, Axedale