



5 Swanson Boulevard Strathfieldsaye VIC

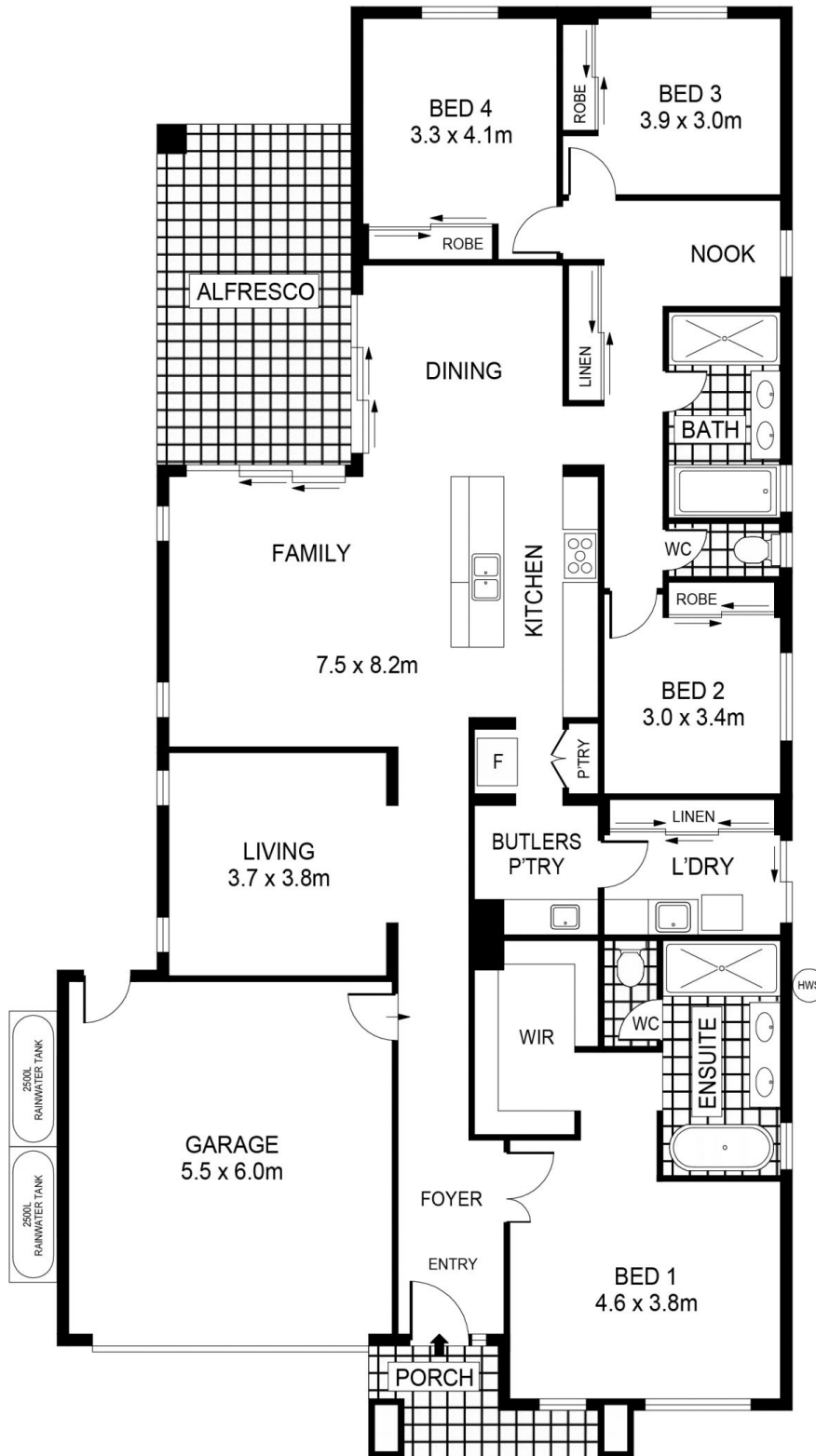
4  2  2 

Set in the prestigious Imagine Estate this beautiful family home is handy to primary schools, ovals, playgrounds and shopping, with easy bicycle or pedestrian access. An inspection will reveal all the high end features including 2 separate living areas with the family/kitchen/ dining all connecting to a fabulous alfresco area. Offering a study nook, Butler's pantry, stone bench top, Smeg 900mm gas cooktop and oven also Smeg dishwasher and microwave, plus high end floor coverings as well as solar panels. The 4 bedrooms include a large master bedroom with a grand dressing room and ensuite, contemporary bathroom design with full sized bath. Outside offers picture perfect landscaping, completed front and back. As originally a display home there is a large amount of quality upgraded fixtures and fittings, making this a great opportunity for the family home buyer.

Price : \$ 755,000
Land Size : 568 sqm
View : <https://www.bendigoballaratrealestate.com.au/sale/vic/greater-bendigo-region/strathfieldsaye/residential/house/7908668>



Sue Dearaugo
 03 54449888
 0418 518 774



0 1 2 3 4 5
SCALE (METRES)

SCALE IN METRES. INDICATIVE ONLY. DIMENSIONS ARE APPROXIMATE. ALL INFORMATION CONTAINED HEREIN IS GATHERED FROM SOURCES WE BELIEVE TO BE RELIABLE. HOWEVER WE CANNOT GUARANTEE IT'S ACCURACY AND INTERESTED PARTIES SHOULD RELY ON THEIR OWN ENQUIRIES.
Ref. No: 240205

INT : 207m²
PORCH : 5m²
GARAGE : 33m²
ALFRESCO : 19m²

5 SWANSON BOULEVARD