

Bendigo



20 Landale Drive Strathdale VIC

4 2 2

Presenting spacious and timeless living in one of Strathdale's most exclusive areas, this charismatic style home offers immediate comfort with immaculate finishes. Situated on an elevated block, this pristine property has been professionally designed and quality built by high profile builder Paul Gray Bendigo. The home features a sizeable formal lounge and practical living area plus a fabulous separate study. With an abundance of natural light there is a functional 'Galley' style quality white kitchen complemented with superior black granite benchtops, a walk-in pantry, a 'Bosch' Oven and 'Bosch' Dishwasher. This area flows via double glass doors from the kitchen/living area to a blissful backyard with a spacious covered alfresco area. An ideal space for a family BBQ or to unwind with a morning coffee or afternoon novel. The stunning rear garden is private ...

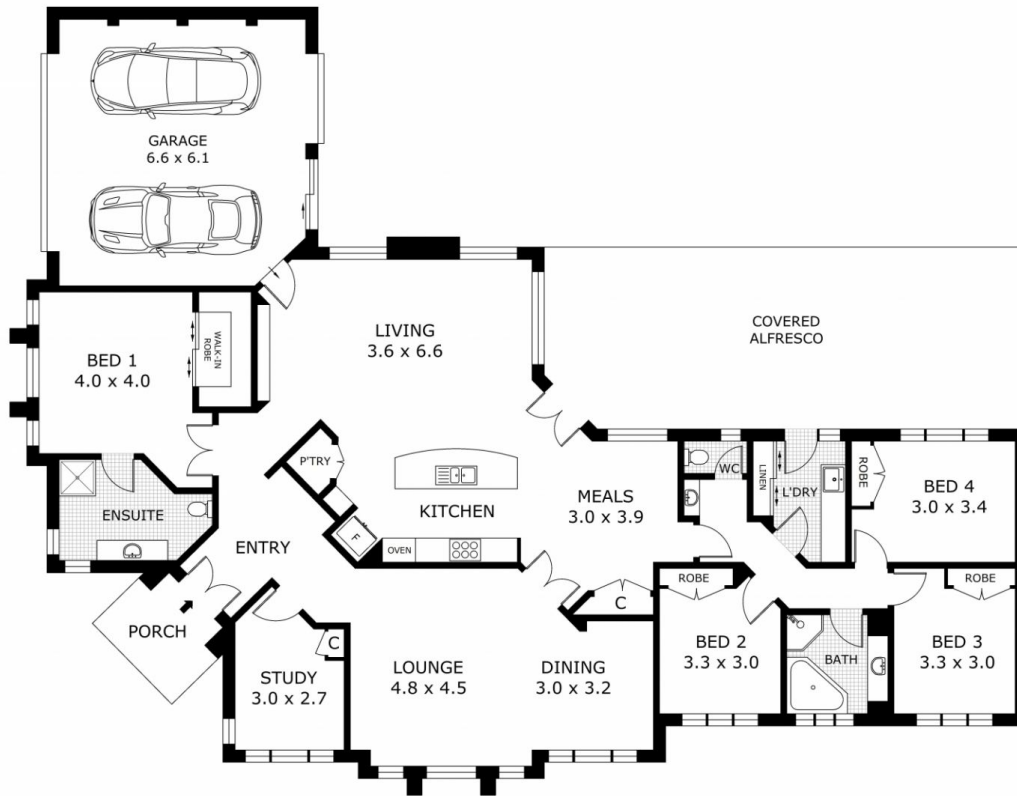
Price : \$ 960,000

Land Size : 918 sqm

View : <https://www.bendigoballaratreal estate.com.au/sale/vic/greater-bendigo-region/strathdale/residential/house/7916015>



Jen Wallace
03 54449888
0407 867 839



Scale in metres. Indicative only. Dimensions are approximate. All information contained herein is gathered from sources we believe to be reliable. However we cannot guarantee its accuracy and interested parties should rely on their own enquiries.

Residence	- 206.6 m ²
Alfresco	- 51.5 m ²
Garage	- 40.2 m ²
Total	- 298.3 m ²



20 Landale Drive, Strathdale