**20 Allen Street Epsom VIC**

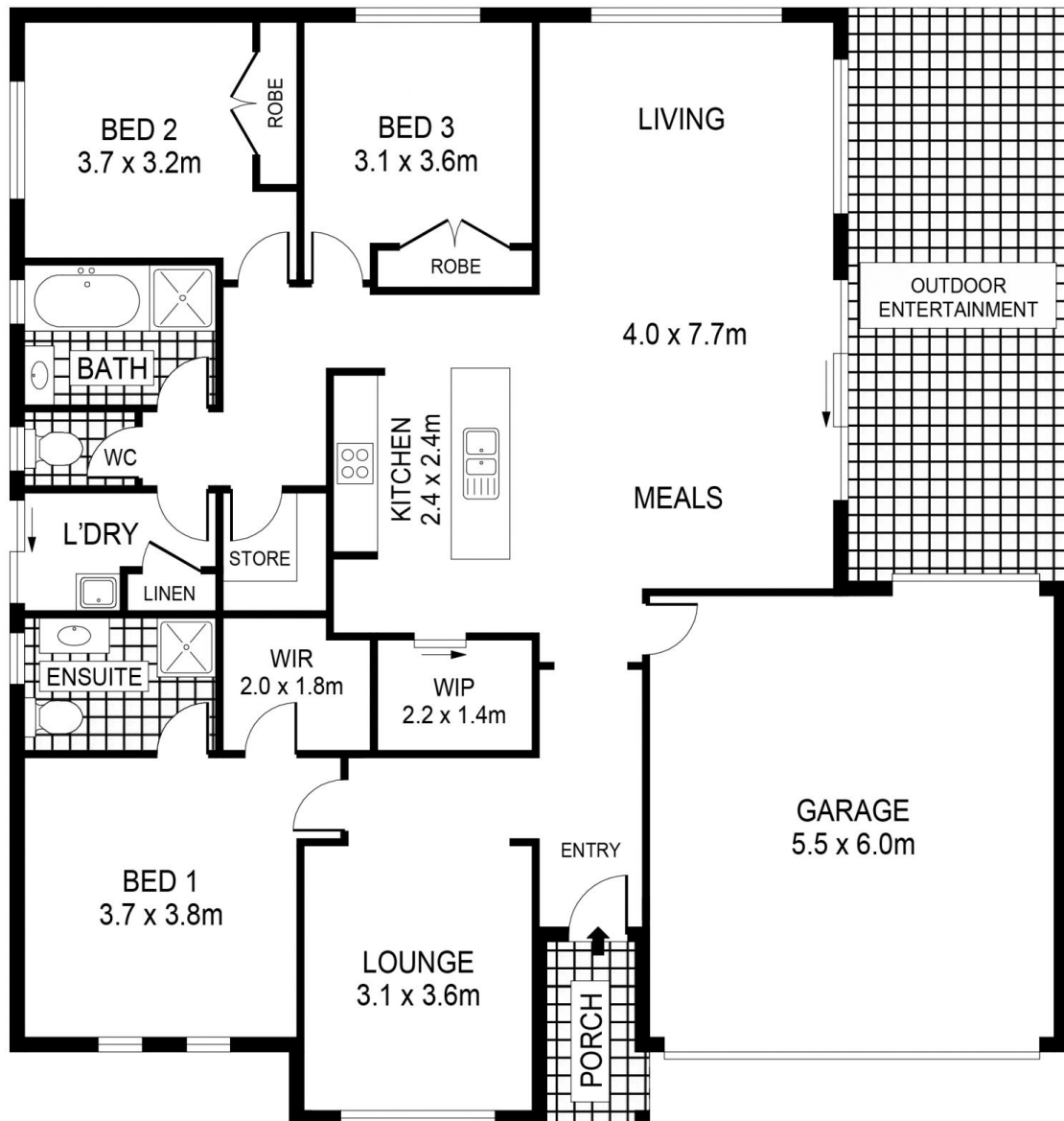
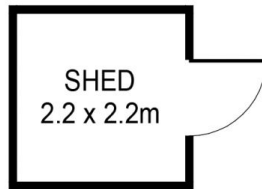
3 2 2

This stylish and spacious home located in the popular suburb of Epsom is sure to impress when you walk in. Immaculately presented throughout, you will enjoy a spacious open plan living/kitchen/meals area incorporating a walk-in pantry, separate second living area to the front of the home with access through to the master bedroom containing WIR and ensuite. Features include BIRs in the two other bedrooms, ample storage in the separate linen closet, and ducted heating/evaporative cooling throughout will keep you comfortable all year round. The undercover patio area overlooks the spacious backyard with the bonus of a garden shed. Established on a generous sized allotment with rear access through the double remote garage. Within minutes you can easily access plenty of services including Epsom Village, recreational reserve, schools, and much more. Come and explor ...

**View :** <https://www.bendigoballaratrealstate.com.au/sale/vic/greater-bendigo-region/epsom/residential/homeuse/7924450>



**Sue Dearaugo**  
**03 54449888**  
**0418 518 774**



SCALE (METRES)

SCALE IN METRES. INDICATIVE ONLY. DIMENSIONS ARE APPROXIMATE. ALL INFORMATION CONTAINED HEREIN IS GATHERED FROM SOURCES WE BELIEVE TO BE RELIABLE. HOWEVER WE CANNOT GUARANTEE ITS ACCURACY AND INTERESTED PARTIES SHOULD RELY ON THEIR OWN ENQUIRIES.  
Ref. No: 240214

INT	:	150m <sup>2</sup>
SHED	:	5m <sup>2</sup>
PORCH	:	3m <sup>2</sup>
GARAGE	:	33m <sup>2</sup>
OUTDOOR ENTERTAINMENT	:	23m <sup>2</sup>

20 ALLEN STREET

EPSOM