



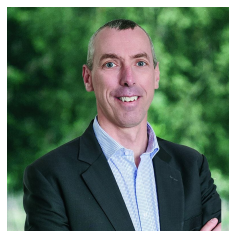
2 Pinnaroo Court Strathdale VIC

4  2  3 

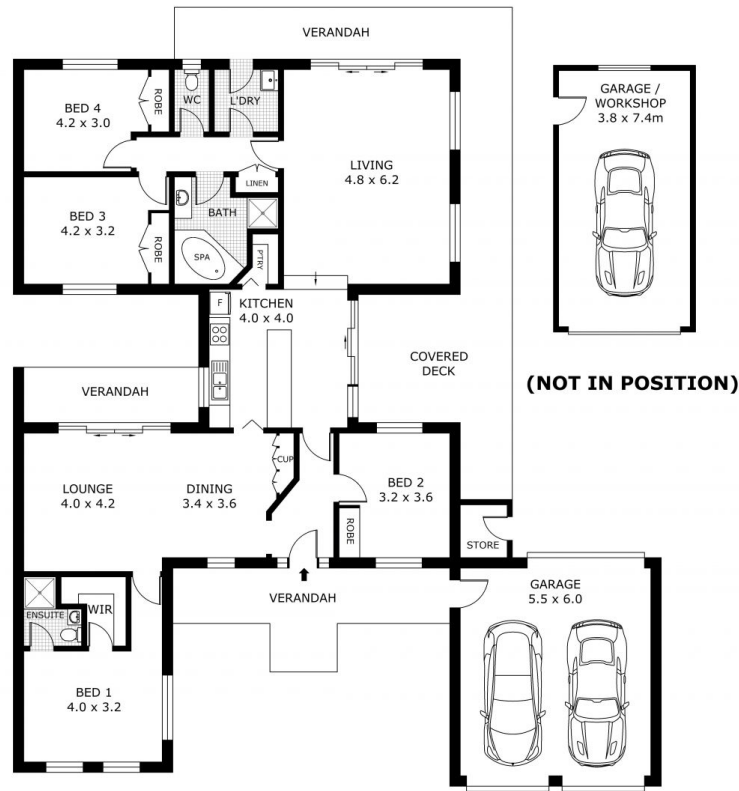
Nestled in the highly sought-after Strathdale locale, this charming brick veneer family home presents a fresh and inviting living experience. Situated mere moments from Strathdale Park, Recreation Reserve, and the scenic Kennington Reservoir, this residence offers exceptional value and convenience. Comprising four bedrooms, including a master with ensuite and walk-in robe, this home provides ample space for the entire family. The formal lounge exudes elegance, while the heart of the home is the gourmet kitchen, boasting high-end appliances, ample storage, and sleek countertops, making it a chef's delight. A spacious family/rumpus room is bathed in natural light, creating an inviting atmosphere for relaxation and entertainment which adds versatility to the layout. Enjoy year-round comfort with ducted evaporative cooling and gas heating, ensuring a cozy ambianc ...

Price : \$ 620,000

View : <https://www.bendigoballaratrealestate.com.au/sale/vic/greater-bendigo-region/strathdale/residential/house/7947650>



Andrew Murphy
03 5444 9888
0407 303 386



0 1 2 3 4 5

Scale in metres. Indicative only. Dimensions are approximate. All information contained herein is gathered from sources we believe to be reliable. However we cannot guarantee its accuracy and interested parties should rely on their own enquiries.

Residence	- 163.9 m ²
Deck	- 30.0 m ²
Verandah	- 38.2 m ²
Garage	- 33.0 m ²
Garage / Workshop	- 28.1 m ²
Total	- 293.2 m ²



2 Pinnaroo Court, Strathdale