



11 Juilette Court Maiden Gully VIC

5  2  2 

Nestled in the serene suburb of Maiden Gully, this contemporary residence, meticulously crafted by Murray Wearne, exemplifies unparalleled luxury and quality craftsmanship.

Stepping through the entrance of this luxuriously appointed split level home you are welcomed by the warmth of a timber floored hallway which leads to the heart of the home. From the hall there is direct access to a spacious garage and further along are three generously sized bedrooms each with large built-in robes. The Laundry equipped with a dedicated drying room, the main bathroom and toilet are also accessed from the hall. At the end of the hall is a comfortable family room which opens to a charming, decked terrace, ideal for outdoor gatherings. The stunning kitchen features stone bench tops, high end

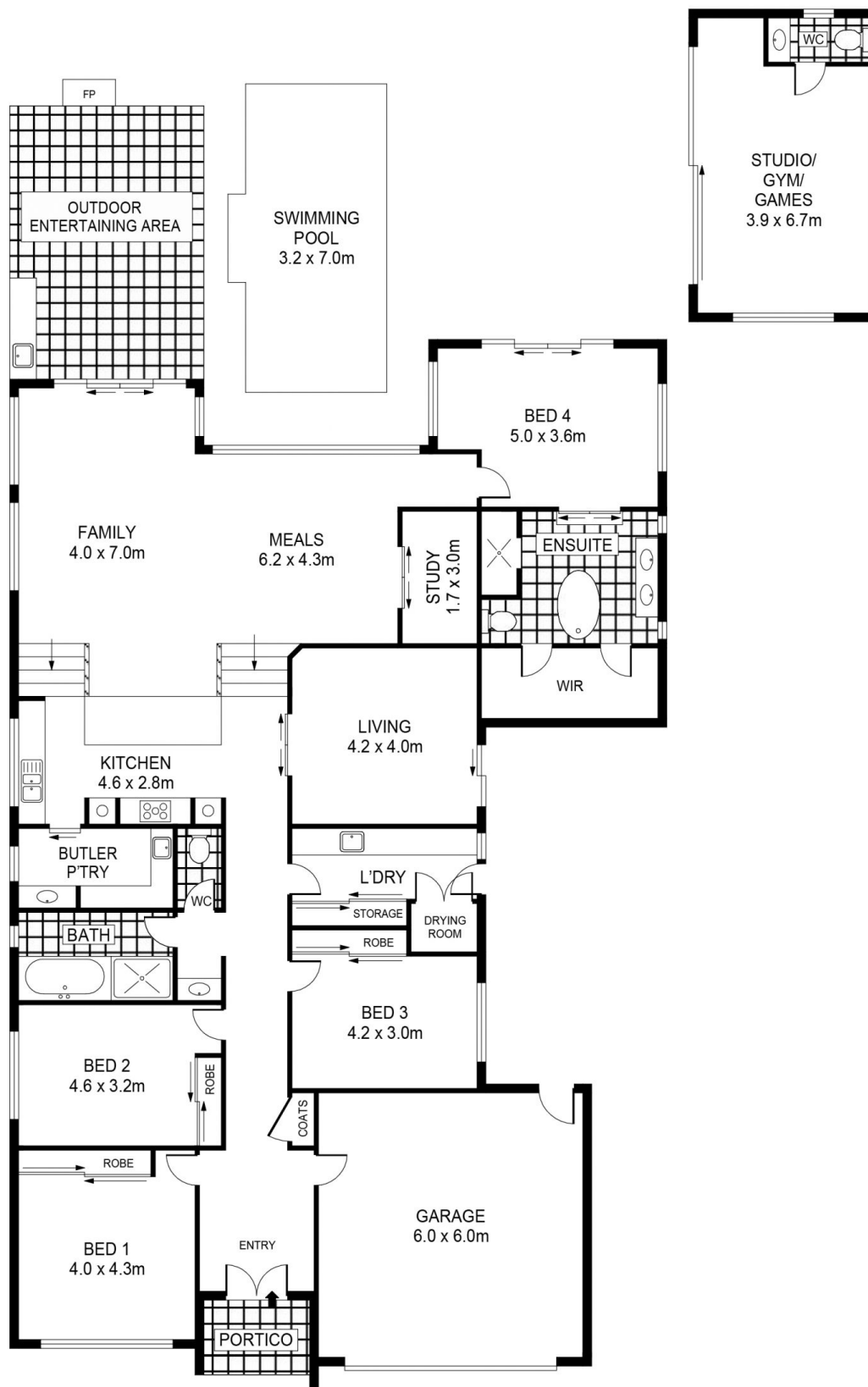
Price : \$1,175,000 - \$1,250,000

Land Size : 799 sqm

View : <https://www.bendigoballaratrealstate.com.au/sale/vic/greater-bendigo-region/maiden-gully/residential/house/7961946>



Cameron Register
03 5444 9888
0411 956 937



SCALE (METRES)

SCALE IN METRES. INDICATIVE ONLY. DIMENSIONS ARE APPROXIMATE. ALL INFORMATION CONTAINED HEREIN IS GATHERED FROM SOURCES WE BELIEVE TO BE RELIABLE. HOWEVER WE CANNOT GUARANTEE ITS ACCURACY AND INTERESTED PARTIES SHOULD RELY ON THEIR OWN ENQUIRIES.
Ref. No: 230403

INT 250m²
GARAGE 36m²
PORTICO 4m²
STUDIO/GYM/GAMES 26m²
OUTDOOR ENTERTAINING AREA 27m²



11 JUILLETTE COURT