



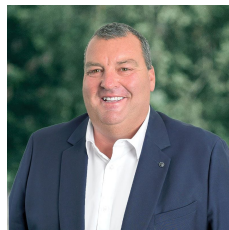
### 12 Illingworth Street Golden Square VIC

3  1  1 

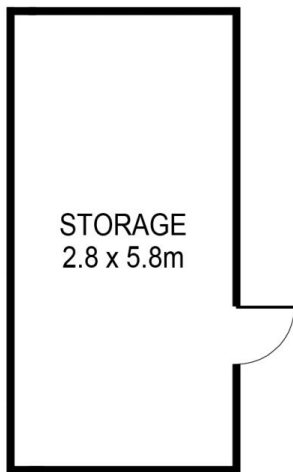
Nestled in one of Golden Square's quietest and most tightly held pockets, this charming mid-century flat-roofed gem presents an ideal opportunity for first-home buyers, renovators, or investors seeking a property with both character and potential. Stylishly presented with a touch of retro flair, the home offers immediate comfort while leaving room for your personal touch. With new floor coverings throughout and a fresh feel from front to back, this property is a perfect blend of vintage charm and modern updates.

The striking façade and mature front garden provide strong street appeal, while the elevated rear deck captures sweeping views of the Bendigo skyline-ideal for relaxing or entertaining. Inside, the inviting front porch flows into a spacious loungeroom. Here, comfort reigns with a gas log fireplace, refrigerated air conditioning, and ceiling fan, cr ...

**Price** : \$480,000 - \$520,000  
**Land Size** : 447 sqm  
**View** : <https://www.bendigoballaratrealstate.com.au/sale/vic/greater-bendigo-region/golden-square/residential/house/8440843>

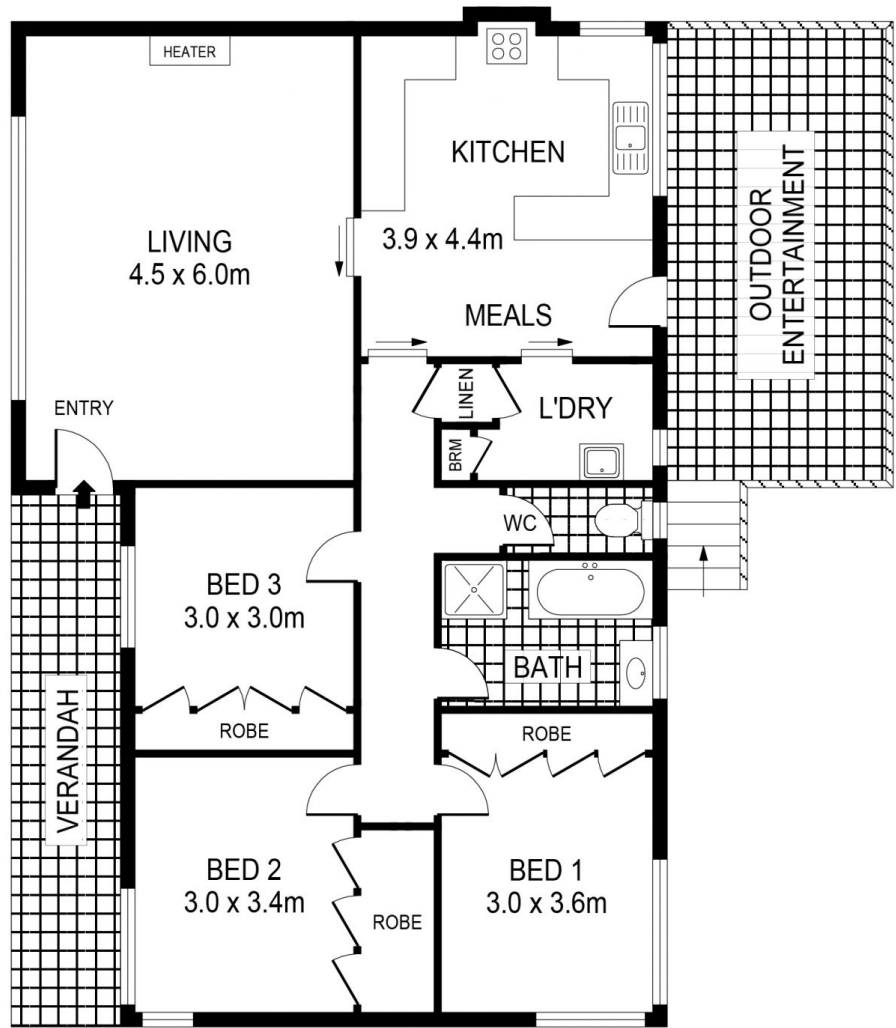


**Cameron Register**  
 03 5444 9888  
 0411 956 937

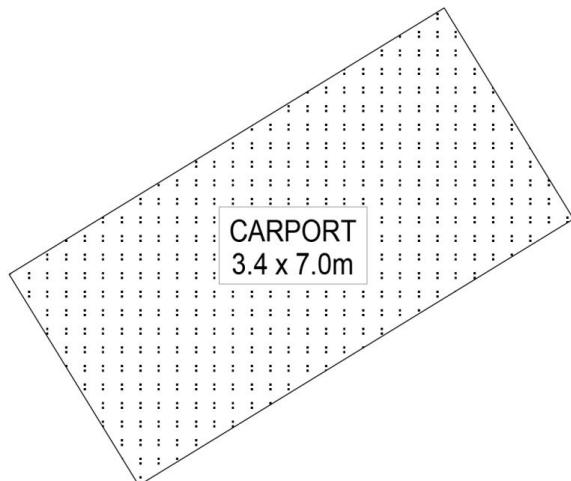


STORAGE  
2.8 x 5.8m

LOWER LEVEL



ENTRY LEVEL



CARPORT  
3.4 x 7.0m



SCALE (METRES)

SCALE IN METRES. INDICATIVE ONLY. DIMENSIONS ARE APPROXIMATE. ALL INFORMATION CONTAINED HEREIN IS GATHERED FROM SOURCES WE BELIEVE TO BE RELIABLE. HOWEVER WE CANNOT GUARANTEE ITS ACCURACY AND INTERESTED PARTIES SHOULD RELY ON THEIR OWN ENQUIRIES.  
Ref. No: 250728

|                       |   |                   |
|-----------------------|---|-------------------|
| INT                   | : | 115m <sup>2</sup> |
| STORAGE               | : | 16m <sup>2</sup>  |
| CARPORT               | : | 24m <sup>2</sup>  |
| VERANDAH              | : | 11m <sup>2</sup>  |
| OUTDOOR ENTERTAINMENT | : | 16m <sup>2</sup>  |

12 ILLINGWORTH STREET

GOLDEN SQUARE