

Bendigo



### 16 Chelsea Boulevard Strathdale VIC

3 1 2

3 Bedroom Brick veneer home, perfectly positioned on a corner block, in a prime location in the ever-popular Strathdale.

Features include:

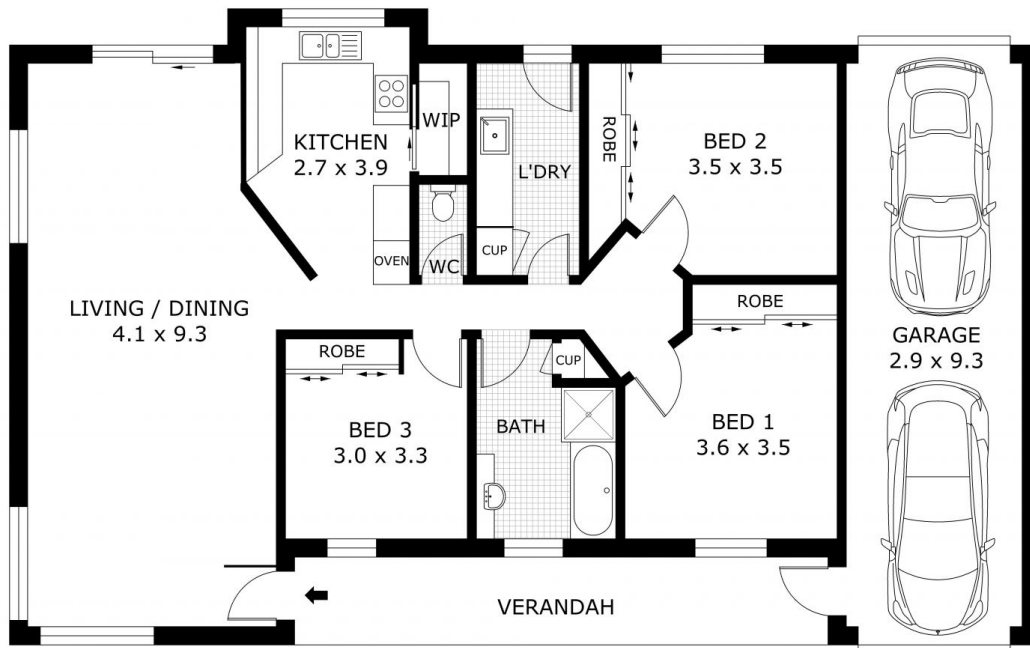
- 3 bedrooms all with built in robes
- Bright and light lounge room
- Well-appointed kitchen features ample bench space, Dishwasher, gas cooking, good storage with a walk in pantry.
- Meals area with direct access to the rear low maintenance yard.
- Split system heating and cooling for year-round comfort plus ceiling fan in the main bedroom.
- Central bathroom with separate bath and shower.

**Land Size** : 428 sqm

**View** : <https://www.bendigoballaratrealstate.com.au/lease/vic/greater-bendigo-region/strathdale/residential/house/8562280>



**Lauren Straub**  
03 5444 9888



Scale in metres. Indicative only. Dimensions are approximate. All information contained herein is gathered from sources we believe to be reliable. However we cannot guarantee its accuracy and interested parties should rely on their own enquiries.

Residence	- 112.3 m <sup>2</sup>
Garage	- 27.0 m <sup>2</sup>
Verandah	- 12.8 m <sup>2</sup>
<b>Total</b>	<b>- 152.1 m<sup>2</sup></b>



# 16 Chelsea Boulevard, Strathdale