

Bendigo



22/60a Whirrakee Parade Huntly VIC

2 2 2

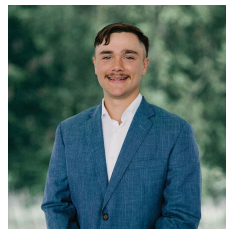
Positioned within the highly sought-after Lincoln Place Huntly over-50s lifestyle community, this exceptional residence at 22/60A Whirrakee Parade stands out as one of the finest homes offered within the village to date.

Thoughtfully upgraded well beyond the standard specification, this beautifully appointed unit delivers a level of quality, comfort, and style that is rarely found. Every detail has been carefully selected to create a home that is both luxurious and effortlessly functional.

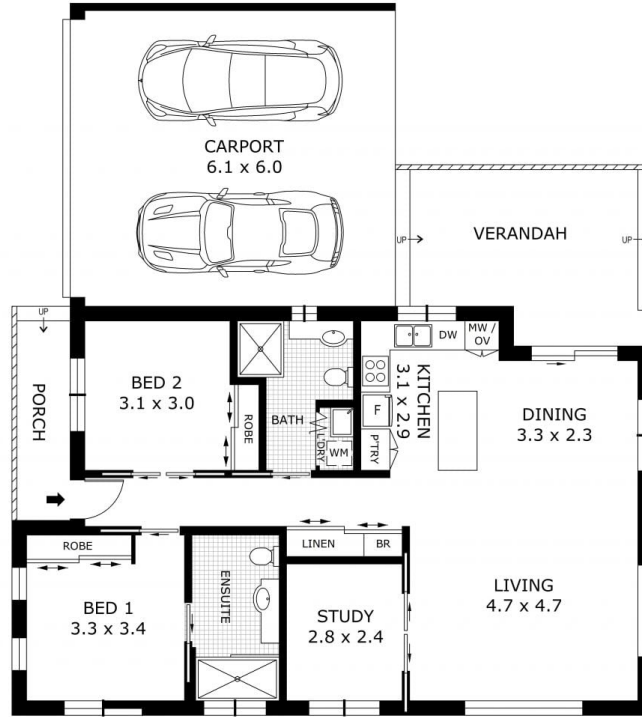
At the heart of the home, the stunning kitchen has been enhanced with a large island bench complete with additional storage cupboards, a pull-out pantry, upgraded Westinghouse appliances, and a sleek 600mm induction cooktop, making it ideal for everyday living and entertaining

Price : \$570,000 - \$600,000

View : <https://www.bendigoballaratrealstate.com.au/sale/vic/greater-bendigo-region/huntly/residential/rental/8682591>



Deacon Evans
03 5444 9888
0418225688



Scale in metres. Indicative only. Dimensions are approximate. All information contained herein is gathered from sources we believe to be reliable. However we cannot guarantee its accuracy and interested parties should rely on their own enquiries.

Residence	- 91.1 m ²
Verandah	- 17.8 m ²
Porch	- 4.5 m ²
Carport	- 36.6 m ²
Total	- 150.0 m ²



22/60 Whirrakee Parade, Huntly